

FIG. 1.—IMPROVED CABINET

(ASH'S ENGLISH MANUFACTURE).



For workmanship and finish this Cabinet stands unrivalled, and forms a very handsome and valuable addition to the Operating Room.

The top compartment contains back and side mirrors and a marble shelf, beneath which are placed fourteen drawers varying in depth from half an inch to $1\frac{1}{2}$ inches. Immediately under the drawers is a pull-out shelf for instruments, the width of the Cabinet and $9\frac{1}{2}$ inches from back to front. When not in use the whole of the upper part is covered by a revolving shutter, which is fitted with lock and key. All the drawers are nicely lined with maroon cloth.

OUTSIDE DIMENSIONS:

58 inches high; 28 inches wide; 15 inches deep.

drawers $2\frac{1}{2}$ inches deep; and a cupboard, with two adjustable shelves, which measures inside 26 inches high, 24 wide, 13 deep. The Cabinet is mounted on casters, and each of the drawers and the cupboard are provided with lock and key.

The lower portion of the Cabinet is occupied by two

In well-seasoned Walnut and Ebony, highly polished
Ditto, to order, with Looking-Glass Panels in cupboard doors

£	s.	d.
16	16	0
17	17	0
	B	

FIG. 10A.—DENTAL CABINET

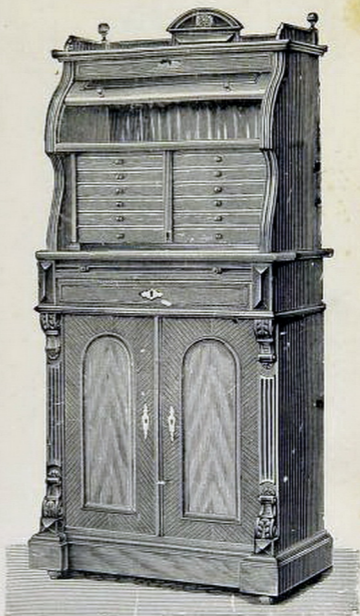
(ASH'S ENGLISH MANUFACTURE).

This Cabinet possesses several novel features, and is recommended as good, cheap, and serviceable.

The recess in the upper portion, which is provided with a revolving shutter, has a mirror across the back, and a marble slab on the floor, 26 inches long by $12\frac{1}{2}$ inches wide. Beneath this slab there are ten small drawers and one large, varying in depth from $1\frac{3}{8}$ inches to $1\frac{1}{4}$ inches.

All the drawers are furnished with spring stops, so that they can be readily taken out of the Cabinet when they require cleaning.

In the lower part of the Cabinet there is a marble slab, a pull-out shelf for instruments, and a drawer, $24\frac{1}{4}$ inches long, $12\frac{1}{4}$ inches wide, and $2\frac{3}{4}$ inches deep, fitted with lock and key. The cupboard under this drawer has one shelf, and is also fitted with lock and key.



OUTSIDE DIMENSIONS :

70 inches high ; 32 inches wide ; 17 inches deep.

Cabinet in well-seasoned wood, veneered with Walnut, with \pounds s. d.
 Dark Marble Slabs 11 5 0

Cabinets made to order, at reasonable prices, to Dentists' own designs.

FIG. 12.—DENTAL CABINET.

This Cabinet is in German Renaissance style, and is extremely elegant in appearance. It is of first-class workmanship, tastefully decorated with handsome carvings, and highly finished.

Parts of the walnut carvings are bright polished, and show to advantage on the larger dull - polished ground-work.

In addition to its usefulness it forms a handsome ornament to the operating room.

The interior is the same as that of Fig. 10A Cabinet, shown on the preceding page.

The revolving shutter is controlled by the lock shown above it. There are eleven drawers in the upper part, varying in depth from $1\frac{1}{4}$ to 2 inches, and one lock and key which secures or unlocks them all at once.

There is a marble slab on the top of the lower part, underneath which are a pull - out shelf for instruments, $24\frac{1}{4}$ by $11\frac{3}{4}$ inches, covered with cloth; a large drawer $23\frac{1}{4}$ by $15\frac{1}{2}$ by $2\frac{1}{2}$ inches, with lock and key; and a cupboard $24\frac{1}{2}$ inches high by $27\frac{1}{2}$ wide by 14 deep.

£ s. d.
19 0 0

OUTSIDE DIMENSIONS :

82 inches high ; $36\frac{1}{2}$ inches wide ; $21\frac{1}{4}$ inches deep.

Price, with Dark Marble Slabs